

IRP1-FPK RCB1090 Cover Panel Installation Manual

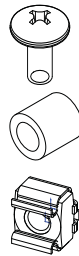


Included in this package

(6) #10-32 x 3/4" Rack Screws

(6) #10 Plastic Spacer

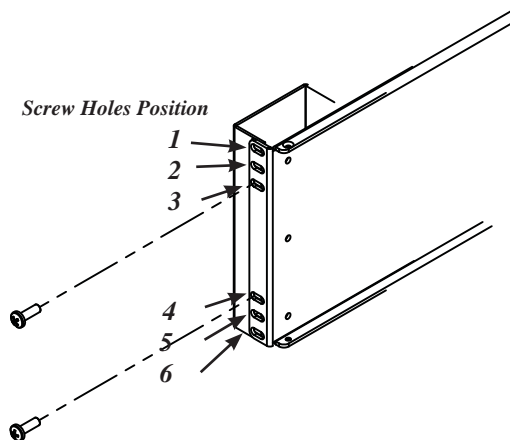
(6) #10-32 Cage Nuts



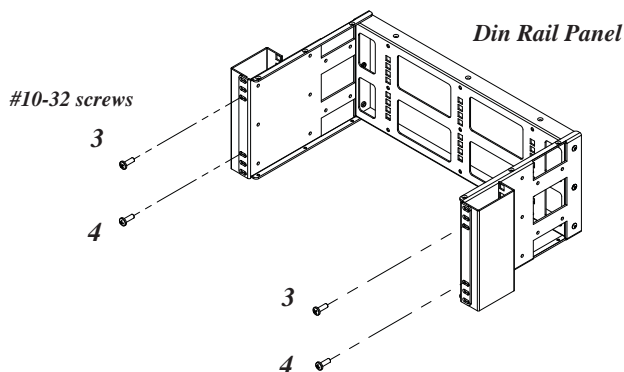
This document describes how to install RCB1090 filler panel as cover panel for Solid, Slotted or Din Rail Panels in a 19" Server Rack cabinet using #10-32 Cage nuts or #10-32 tap holes.

Installation Steps

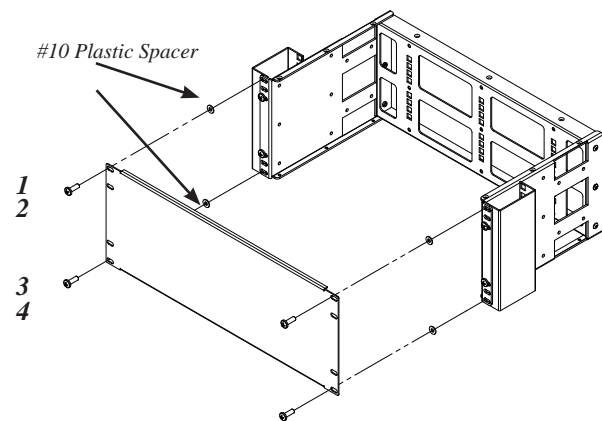
Step 1. If your cabinet is using #10-32 threaded tap screw holes, you can skip Step 1 and go to Step 2. If your cabinet is using Cage Nuts, install #10-32 cage nuts in screw hole position #1 and #6 on right and left side of cabinet first. Install either #10-32 or #12-24 cage nuts in screw hole position #2, #3, #4 and #5.



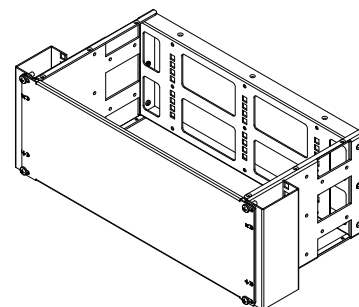
Step 2. Install your Solid, Slotted or DIN Rail panel enclosure into 19" cabinet first. Only use the screw hole #2, #3, #4 and #5 position to secure your 4U DIN Rail panel into cabinet. Use the correct screws required for your cabinet. Repeat the same screw holes position for the other side. It is critical that you only use these screw holes to install your Solid, Slotted or DIN Rail panel enclosures. Otherwise, you might have difficulty installing RCB1090 Cover panel.



Step 3. Align top screw mounting hole #1 on RCB1090 filler panel with #1 screw hole on DIN Rail panel. Place #10 plastic space between RCB1090 panel and cabinet. You might need a extra hand to help you to hold on the RCB1090 Panel. Using #10-32 3/4" screw to secure RCB1090 Panel in place. Do not tighten it yet. Place another #10 plastic space in screw hole #4 between RCB1090 panel and cabinet. Secure it with #10-32 3/4" screw. Do not tighten yet.



Step 4. Repeat Step 3 for other side of the panel. Tighten all 4 screws to complete the installation.



Step 5. Installation complete.